

Quick and Dirty Frames

Dreamweaver features two methods for getting prefab frames layouts: the menu command **Insert > Frames** and the Frames panel on the Objects panel. Both of these allow you to choose a basic, preset frames page layout without having to figure out what to split.

If you create a frames page using one of these methods, you can skip the next couple of sections about how to add frames to a page, but be sure to read the section called *Targeting Links*, later in this chapter.

To use the Insert Frames menu:

1. Create a new, blank page.
2. From the Document window menu bar, select **Insert > Frames** (**Figure 13.13**), and then choose one of the following options, as mocked up in **Figure 13.14**:
 - ◆ Left
 - ◆ Right
 - ◆ Top
 - ◆ Bottom
 - ◆ Left and Top
 - ◆ Left Top
 - ◆ Top Left
 - ◆ Split (Split Frame Center)

The Document window will create the frameset design you selected (**Figure 13.15**). *Split* splits either the page or the selected frame into four equal squares.

✓ Tip

- Frames pages created using the Frames menu or Objects panel shortcuts do not have frame borders, and they may have preset resize and scrollbar settings. (See *Frameset Options*, later in this chapter for more about these features). The frames on these pages are also prenamed; see *Naming Frames*, later in this chapter, for more about using frame names.

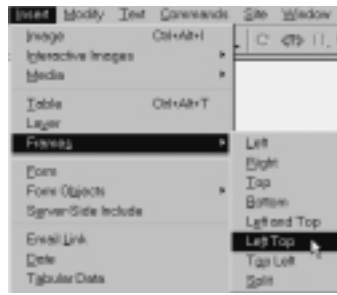


Figure 13.13 Select **Insert > Frames** from the Document window menu bar, and then choose a layout option.

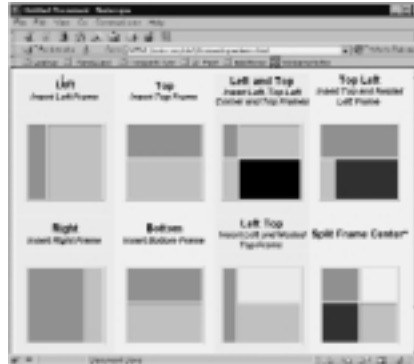


Figure 13.14 The heading over each layout is its name in the **Insert > Frames** menu, and the subhead is the name of the layout in the Frames panel of the Objects panel. *Split Frame Center* is available only in the Objects panel.

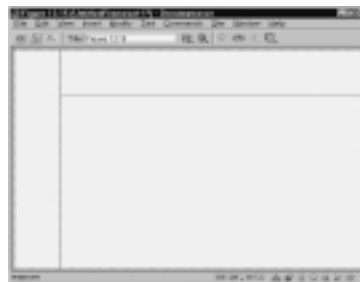


Figure 13.15 I selected **Left Top** from the **Insert > Frames** menu, and the layout appeared in the Document window. Note that the frame borders are not heavy; this is how Dreamweaver displays borders that have been turned off (or set to zero width)—in this case, in the preset attributes of the layout.

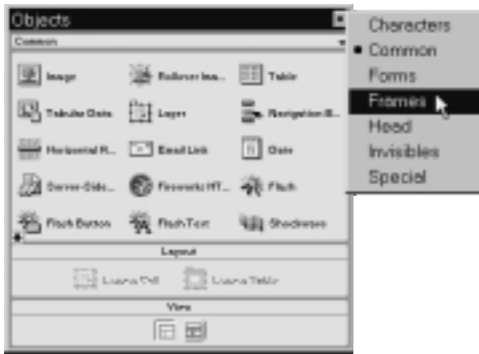


Figure 13.16 Click on the menu button on top of the Objects panel to display various flavors of objects, including Frames.

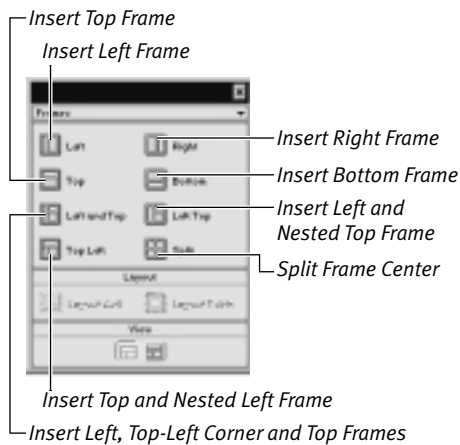


Figure 13.17 Frames objects are actually layouts that you can apply to your page with the click of a button. I resized the panel (by dragging the lower-right corner) after selecting Frames objects.

Prefab Frames with the Objects panel

The Objects panel also offers similar options for adding frames-based layouts with the click of a button, as seen previously in **Figure 13.14**.

To create frames using the Objects panel:

1. Display the Objects panel, if necessary, by selecting Window > Objects from the Document window menu bar. The Objects panel will appear.
2. Click the menu button at the top of the Objects panel, and from the menu that appears, select Frames (**Figure 13.16**). The Objects panel will display Frame objects (**Figure 13.17**).
3. On Windows, if you mouse over the objects displayed, you'll see Tool tips describing various options. Click on any button to draw that layout, or drag the button to an existing frame to split a single frame in the manner pictured.

continued on next page

✓ Tips

- As with the Insert > Frames menu command, the frames created using the Object panel may have preset values for borders, the names of the frames, and other options such as scrollbars. These options, and how to change them, are described later in this chapter.
- You may create more than one frameset when you use one of these layouts. If you click within an existing frame and then select one of the preset frames layouts (**Figure 13.18**), the frame you selected will be divided into that frames layout, just as if it were an entire page in the Document window (**Figure 13.19**). This is one way to create *nested framesets*, which are described in detail in the section with that name.

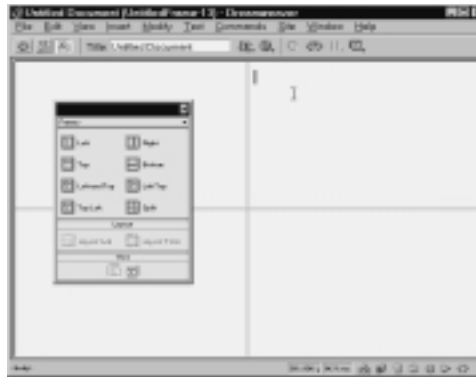


Figure 13.18 First, I used Split Frame Center on a blank page to create four square frames. Then, I selected the top, right frame page by clicking in it.

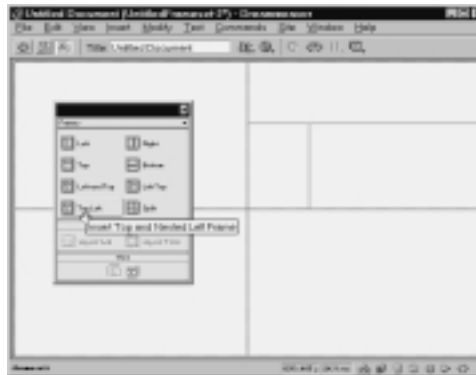


Figure 13.19 I applied the “Insert Top and Nested Left Frame” to the selected, top-right frame, and that frame page divided further into three more frames.



Figure 13.20 In this figure, the Frames panel stands alone. In **Figure 13.21**, I've stacked it with another panel, as described in Chapter 1.

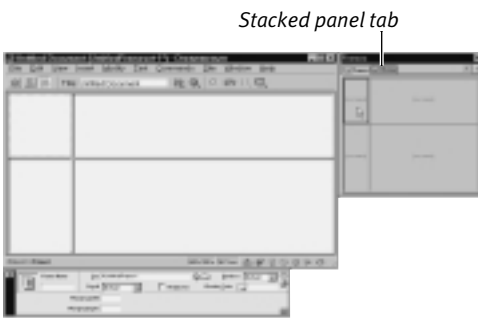


Figure 13.21 When you select a frame, a heavy line appears around the frame in the Frames inspector, and a dashed line appears around it in the Document window. Additionally, the Property inspector displays Frame properties for the frame you selected.

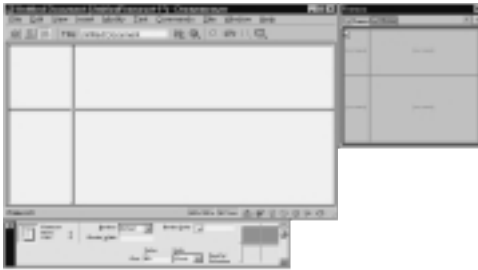


Figure 13.22 When you select an entire frameset by clicking on the frame border in the Document window or Property inspector, the Property inspector displays properties for the frameset.

The Frames Panel

The Frames panel is what you use to select individual frames or entire framesets. To view the Frames panel, select Window > Frames from the Document window menu bar or press Shift+F2. The Frames panel will appear (**Figure 13.20**).

You will need to select each individual frame or frameset in order to modify its properties.

To select a frame:

- ◆ Hold down the Alt (Shift+Option) key and click on the frame in the Document window.

or

In the Frames panel, click on the frame you want to select (**Figure 13.20**).

In either case, a dashed line will appear in the Document window around the frame you selected, and the Property inspector will display the frame's properties (**Figure 13.21**).

Selecting a Frameset

You can select an entire frameset in one of two ways:

- ◆ Click on any of the frame borders in the Document window.
- ◆ In the Frames panel, click on the border around the outside edge of the frames.

Either way, the Property inspector will display properties for the frameset, and a dashed line will appear around all the frames in the frameset (**Figure 13.22**).

Note that the Property inspector displays the layout of columns and rows in a frameset, but all frames are shown with the same dimensions.