

VISUAL **QUICKSTART** GUIDE



Adobe Illustrator

LISA FRIDSMA



© INCLUDES FREE WEB EDITION WITH VIDEO

FREE SAMPLE CHAPTER |



VISUAL QUICKSTART GUIDE

Adobe Illustrator

LISA FRIDSMA

Visual QuickStart Guide
Adobe Illustrator
Lisa Fridsma

Peachpit Press
www.peachpit.com

Copyright © 2022 by Pearson Education, Inc. or its affiliates. All Rights Reserved.
San Francisco, CA
Peachpit Press is an imprint of Pearson Education, Inc.

To report errors, please send a note to errata@peachpit.com

Notice of Rights

This publication is protected by copyright, and permission should be obtained from the publisher prior to any prohibited reproduction, storage in a retrieval system, or transmission in any form or by any means, electronic, mechanical, photocopying, recording, or otherwise. For information regarding permissions, request forms and the appropriate contacts within the Pearson Education Global Rights & Permissions department, please visit www.pearson.com/permissions.

Notice of Liability

The information in this book is distributed on an “As Is” basis, without warranty. While every precaution has been taken in the preparation of the book, neither the author nor Peachpit shall have any liability to any person or entity with respect to any loss or damage caused or alleged to be caused directly or indirectly by the instructions contained in this book or by the computer software and hardware products described in it.

Trademarks

Visual QuickStart Guide is a registered trademark of Peachpit Press, a division of Pearson Education. Adobe, Acrobat, Adobe PDF, Bridge, Illustrator, InDesign, and Photoshop, are either registered trademarks or trademarks of Adobe in the United States and/or other countries.

Unless otherwise indicated herein, any third party trademarks that may appear in this work are the property of their respective owners and any references to third party trademarks, logos or other trade dress are for demonstrative or descriptive purposes only. Such references are not intended to imply any sponsorship, endorsement, authorization, or promotion of Pearson Education, Inc. products by the owners of such marks, or any relationship between the owner and Pearson Education, Inc., or its affiliates, authors, licensees or distributors.

Executive Editor: Laura Norman
Development Editor: Robyn G. Thomas
Senior Production Editor: Tracey Croom
Technical Editor: Monika Gause
Copy Editor: Robyn Thomas
Proofreader: Kelly Anton
Compositor: Lisa Fridsma
Indexer: Lisa Fridsma
Cover Design: RHDG / Riezebos Holzbaur Design Group, Peachpit Press
Interior Design: Peachpit Press with Danielle Foster
Logo Design: MINE™ www.minesf.com

ISBN-13: 978-0-13-759774-1

ISBN-10: 0-13-759774-6

ScoutAutomatedPrintCode

Dedication

To my family, both by blood and by choice—
Your support and love is staggering.

Special Thanks to:

Laura Norman for giving me this amazing opportunity and providing support throughout the journey.

Robyn Thomas for managing with a steady hand and keen eyes throughout the process.

Von Glitschka for lending his expertise and voice in producing the videos.

Tracey Croom for being my production editing hero.

Monika Gause for being my technical editing hero.

Kelly Anton for being my proofreading hero.

Pearson's Commitment to Diversity, Equity, and Inclusion

Pearson is dedicated to creating bias-free content that reflects the diversity of all learners. We embrace the many dimensions of diversity, including but not limited to race, ethnicity, gender, socioeconomic status, ability, age, sexual orientation, and religious or political beliefs.

Education is a powerful force for equity and change in our world. It has the potential to deliver opportunities that improve lives and enable economic mobility. As we work with authors to create content for every product and service, we acknowledge our responsibility to demonstrate inclusivity and incorporate diverse scholarship so that everyone can achieve their potential through learning. As the world's leading learning company, we have a duty to help drive change and live up to our purpose to help more people create a better life for themselves and to create a better world.

Our ambition is to purposefully contribute to a world where:

- Everyone has an equitable and lifelong opportunity to succeed through learning.
- Our educational products and services are inclusive and represent the rich diversity of learners.
- Our educational content accurately reflects the histories and experiences of the learners we serve.
- Our educational content prompts deeper discussions with learners and motivates them to expand their own learning (and worldview).

While we work hard to present unbiased content, we want to hear from you about any concerns or needs with this Pearson product so that we can investigate and address them.

- Please contact us with concerns about any potential bias at www.pearson.com/report-bias.html.

Contents at a Glance

	Introduction	xiii
Chapter 1	The Basics	1
Chapter 2	Customizing the Application	11
Chapter 3	Working with Artboards	23
Chapter 4	Working with Color	33
Chapter 5	Navigating Documents	51
Chapter 6	Organizing Artwork	65
Chapter 7	Selecting Elements	77
Chapter 8	Customizing Strokes	87
Chapter 9	Drawing Lines, Curves, and Paths	97
Chapter 10	Creating Shapes and Symbols	109
Chapter 11	Adding and Customizing Text	117
Chapter 12	Working with Brushes and Sketch Tools	145
Chapter 13	Modifying Vector Objects and Paths	169
Chapter 14	Transforming Objects	193
Chapter 15	Adding Visual Effects	217
Chapter 16	Managing Appearance Attributes	237
Chapter 17	Importing Assets	245
Chapter 18	Saving and Exporting Files and Assets	255
Appendix A	Illustrator Preferences	273
Appendix B	Keyboard Shortcuts	287
	Index	290

Table of Contents

Introductionxiii
	How to Use this Book	xiii
	Sharing Space with Windows and macOS	xiv
	Online Content	xiv
Chapter 1	The Basics	1
	The Illustrator Interface	2
	Launching Illustrator	4
	Learning About Illustrator	5
	Opening an Existing File	6
	Creating a New File	7
	Working with Templates	10
Chapter 2	Customizing the Application	11
	Accessing the Document Windows	12
	Using the Toolbar	14
	Working with Panels	16
	Working with the Properties Panel	18
	Working with the Control Panel	19
	Customizing Workspaces	20
	Configuring Illustrator Preferences	22
Chapter 3	Working with Artboards	23
	Artboards Overview	24
	Adding Artboards	25
	Modifying Artboards	27
	Managing Artboards	31
Chapter 4	Working with Color	33
	Accessing Fill and Stroke Controls	34
	Using the Eyedropper Tool	35
	Using the Color Picker	36
	Using the Color Panel	38
	Using the Swatches Panel	40
	Using the Color Guide Panel	46
	Applying Color Changes Using Menus	48

Chapter 5	Navigating Documents	51
	Changing Magnification	52
	Using the Hand and Rotate View Tools.	56
	Using the Navigator Panel	57
	Changing View Modes	58
	Using Rulers	60
	Using Guides and Grids	62
	Using Smart Guides.	64
Chapter 6	Organizing Artwork.	65
	Organizing Elements Using Layers	66
	Selecting Elements Using Layers	70
	Working with Groups	71
	Managing Artwork Hierarchy and Structure	72
	Aligning and Distributing Elements	75
Chapter 7	Selecting Elements	77
	Selecting Objects Using Tools.	78
	Working with Isolation Mode.	82
	Selecting Objects Using Commands	84
	Setting Selection Preferences.	86
Chapter 8	Customizing Strokes	87
	Selecting a Stroke.	88
	Working with the Stroke Panel.	89
	Applying Varied Stroke Widths	94
	Converting Stroked Paths to Objects.	96
Chapter 9	Drawing Lines, Curves, and Paths.	97
	Creating Lines and Curves with the Pen Tool	98
	Using the Curvature Tool.	102
	Using the Line Segment Tools Group.	104
	Drawing with the Pencil Tool.	108
Chapter 10	Creating Shapes and Symbols	109
	Creating Rectangles and Squares.	110
	Creating Ovals, Circles, and Pie Segments	113
	Creating Polygons.	114
	Creating Stars	115
	Saving Objects as Symbols	116

Chapter 11	Adding and Customizing Text117
	Adding Text	118
	Choosing Fonts	122
	Customizing Character Settings.	127
	Customizing Paragraph Settings	130
	Working with Tabs.	135
	Using Character and Paragraph Styles.	137
	Working with Special Characters	139
	Managing Text Content.	141
Chapter 12	Working with Brushes and Sketch Tools	145
	Working with the Brushes Panel.	146
	Using Brush Libraries	150
	Creating Brushes	152
	Managing Brushes	162
	Painting with the Paintbrush Tool	163
	Painting with the Blob Brush Tool	165
	Sketching with the Shaper Tool	167
	Sketching with the Pencil Tool.	168
Chapter 13	Modifying Vector Objects and Paths	169
	Modifying Objects Using Bounding Boxes.	170
	Modifying Objects Using Tools	172
	Cutting Objects and Paths Using Tools.	184
	Modifying Paths Using Freeform Tools	186
	Modifying Objects Using Panels	188
	Modifying Objects Using Commands.	192
Chapter 14	Transforming Objects.	193
	Using Liquify Tools to Reshape Objects	194
	Blending Objects	201
	Masking Artwork	204
	Applying Transparency and Blending Modes	206
	Applying Gradients	209
	Working with Live Paint.	215
Chapter 15	Adding Visual Effects.217
	Applying Illustrator Effects.	218
	Applying Photoshop Effects	230

Chapter 16	Managing Appearance Attributes	237
	Modifying Applied Effects Using the Properties Panel238
	Using the Appearance Panel239
	Working with Graphic Styles242
	Using Graphic Style Libraries244
Chapter 17	Importing Assets	245
	Placing Files246
	Managing Placed Files248
	Using Image Trace to Convert Raster Images to Vector Artwork250
	Importing Photoshop (.psd) Files252
	Importing Acrobat (.pdf) Files253
	Importing Text Documents254
Chapter 18	Saving and Exporting Files and Assets	255
	Maximizing Document Efficiency256
	Managing Color Settings257
	Managing Metadata259
	Saving Illustrator Files260
	Packaging Files261
	Exporting Files Using Export As262
	Exporting with Export for Screens266
	Using the Asset Export Panel269
	Working with Save for Web270
Appendix A	Illustrator Preferences	273
Appendix B	Keyboard Shortcuts	287
	Index	290

LIST OF VIDEOS

VIDEO 1.1 Creating a new customized document	We'll take a tour of core application interfaces, including the Home screen, as we create a new document from scratch. pg. 9
VIDEO 2.1 Working with multiple documents	We'll navigate working with multiple open documents at once using different viewing options. pg. 13
VIDEO 2.2 Customizing toolbars	We'll explore the flexibility of the Illustrator toolbar, which can be easily customized to accommodate our workflow. pg. 14
VIDEO 2.3 Managing workspaces	We'll demonstrate organizing the application's panels and creating a customized workspace. pg. 21
VIDEO 3.1 Customizing artboards	This video demonstrates how to use different layout sizes for viewing artwork, all within the same document. pg. 29
VIDEO 4.1 Applying fills and strokes using the Eyedropper tool	We'll demonstrate how the Eyedropper tool is a convenient tool for applying fills and stroke quickly, and how those changes appear in the toolbar. pg. 35
VIDEO 4.2 Working with the Color Picker	The Color Picker is a powerful feature for accurately applying colors. We'll take a tour of this dialog box to help you navigate it. pg. 37
VIDEO 4.3 Working with swatches	Using the Swatches panel, we'll organize a document's colors to help with maintaining consistency. pg. 42
VIDEO 4.4 Using menus to apply color changes	We'll explore the menu commands for converting color modes for documents and selections as well as working with the Recolor Artwork feature. pg. 50
VIDEO 5.1 Using view options to assist with selecting elements	From changing magnification to working in different view modes, in this video we'll show how to focus on the important areas as we work in a document. pg. 59
VIDEO 5.2 Working with rulers, guides, grids, and Smart Guides	We'll demonstrate how to use these non-printing features to precisely position artwork elements. pg. 64
VIDEO 6.1 Using layers to organize artwork	This video demonstrates using the Layers panel to organize complex artwork into a cohesive hierarchical structure, allowing us to identify and select elements easily. pg. 73
VIDEO 6.2 Arranging and distributing objects	We'll explore the features in the toolbar, menu commands, and Align panel that help us organize object positioning and hierarchy. pg. 76
VIDEO 7.1 Working with selection tools	The toolbar provides a number of different tools for selecting objects and paths. In this video, we'll demonstrate using each of them. pg. 81
VIDEO 7.2 Working with Isolation mode and selection commands	We'll show how to isolate selected objects, making them easier to work with. We'll also demonstrate other ways of specifically selecting objects using commands. pg. 84
VIDEO 8.1 Working with strokes	This video demonstrates how to add visual interest to basic paths by modifying stroke appearances. pg. 96
VIDEO 9.1 Drawing with the Pen and Curvature tools	We'll walk you through the basics of creating lines and curves using these tools. pg. 103

LIST OF VIDEOS

VIDEO 9.2 Working with the Line Segment tools group	We'll demonstrate how these tools let you precisely create lines, arcs, spirals, and grids. pg. 107
VIDEO 10.1 Creating basic shapes	From basic rectangles and ovals to polygons and stars, in this video we'll demonstrate how to easily create these shapes. pg. 115
VIDEO 10.2 Working with symbols	This video demonstrates how to use the Symbols panel to save and reuse artwork elements. pg. 116
VIDEO 11.1 Working with Type tools	We'll demonstrate how the various tools in the Type tools group behave as we add text to a document. pg. 121
VIDEO 11.2 Working with character and paragraph settings	This video demonstrates how to add visual interest and readability to basic text using the Character and Paragraph panels. pg. 134
VIDEO 11.3 Using the Tabs panel	We'll demonstrate how to use this handy feature to add indents and tab stops to text elements. pg. 136
VIDEO 12.1 Working with the Brushes panel	This video explores the various types of brushes in the Brushes panel that appear when you create a new blank document. We'll also make a copy of an existing brush and modify it. pg. 149
VIDEO 12.2 Working with brush libraries	We'll explore the brush libraries provided with the application, and then save a document's brushes as a new library. pg. 162
VIDEO 12.3 Working with painting tools	This video demonstrates how easily you can replicate freehand brush techniques using the Paintbrush and Blob Brush tools. pg. 166
VIDEO 13.1 Working with bounding boxes	This video explores how key commands affect modifying selections when using the bounding box. pg. 171
VIDEO 13.2 Modifying objects and paths using tools	We'll demonstrate using the Smooth , Path Eraser , and Join tools to adjust paths using freeform actions. pg. 187
VIDEO 13.3 Modifying objects using panels and commands	This video demonstrates how to use the Transform panel and commands to modify objects. We'll also use the Pathfinder panel to create and expand compound paths. pg. 190
VIDEO 14.1 Working with liquify tools and blending objects	We'll explore reshaping objects using liquify tools and then create smooth color fills between two objects using the Blend tool and commands. pg. 203
VIDEO 14.2 Working with masks and transparency	This video demonstrates how masks, blending modes, and opacity settings alter the appearance of overlapping objects. pg. 208
VIDEO 14.3 Working with gradients	We'll explore the various types of gradients and apply them using the Gradient panel and tool. pg. 214
VIDEO 14.4 Working with Live Paint	This video explores how to use Live Paint features to easily convert vector artwork into paintable elements. pg. 215
VIDEO 15.1 Working with the 3D and Materials panel	We'll explore this new feature and demonstrate how 3D effects add depth and visual interest to simple artwork. pg. 222
VIDEO 15.2 Applying Illustrator effects	This video explores applying a variety of predominantly vector-based effects to objects. pg. 229

List of Videos continues

LIST OF VIDEOS

VIDEO 15.3 Applying Photoshop effects	We'll focus on using the Effects Gallery interface to add interesting artistic effects to artwork elements. pg. 235
VIDEO 16.1 Working with the Appearance panel	We'll demonstrate how to use this feature to manage applied effects and attributes for selected objects. pg. 241
VIDEO 16.2 Working with graphic styles	This video demonstrates quickly applying visually interesting attributes using the Graphic Styles panel and style libraries. pg. 244
VIDEO 17.1 Working with placed images and Image Trace	We'll explore the various options for placing images in Illustrator files, and then convert a raster image to vector objects using Image Trace. pg. 251
VIDEO 18.1 Finalizing documents for handoff	We'll demonstrate tidying up a document and packaging it for final handoff. pg. 261
VIDEO 18.2 Exporting files and assets	This video demonstrates the various options for exporting complete documents and assets appropriately for the final output requirements. pg. 272

Introduction

Welcome to Adobe Illustrator, the industry-standard vector graphics application. Illustrator's tools and features provide artists, designers, and illustrators endless possibilities for creating logos, icons, drawings, typography, and complex illustrations for any printed or digital purpose.

Here, we'll share some thoughts to help you get the most from this book. Then you can be on your way to perfecting using the simple, fun, and sophisticated graphics tools in Illustrator.

How to Use this Book

This Visual QuickStart Guide, like others in the series, is a task-based reference. Each chapter focuses on a specific area of the application and presents it in a series of concise, illustrated steps.

This book is meant to be a reference work, and although it's not expected that you'll read through it in sequence from front to back, we've made an attempt to order the chapters in a logical fashion.

The first chapter covers an overview of the Illustrator application interface and walks you through creating a new document. The next two chapters steps you through customizing the application and documents to best suit your needs.

From there you dive into the rich features Illustrator provides for creating colorful and visually interesting designs. The last chapter teaches you a variety of techniques for saving and exporting your artwork.

This book is suitable for the beginner just starting in vector drawing and design, as well as hobbyists, intermediate-level designers, and illustrators.

Sharing Space with Windows and macOS

Illustrator is almost exactly the same on Windows and macOS, which is why this book covers both platforms.

In the few places where a feature is found in one environment but not the other, or if the steps are different for each, we make it clear which version is being discussed.

You'll also see that the screenshots are macOS—but despite a few cosmetic differences such as title bars and menu bars, everything pretty much tracks the same within the user interface itself.

We also include keyboard shortcuts for both platforms as an appendix at the end of the book. Keyboard shortcuts are faster methods of accessing commands compared to choosing items from menus. They are also used and described often in the supplemental video tutorials.

Speaking of...this video icon makes it easy to find the videos to watch in the Web Edition:



VIDEO X.X
Sample video title

TIP To better view the interface onscreen or in print, the screen captures in this book reflect the Medium Light interface rather than the default setting of Dark. You can modify interface settings in Preferences.

Online Content

Your purchase of this Visual QuickStart Guide includes a free online edition of the book, which contains the videos and is accessed from your Account page on www.peachpit.com.

Web Edition

The Web Edition is an online interactive version of the book, providing an enhanced learning experience. You can access it from any device with a connection to the internet, and it contains the following:

- The complete text of the book
- Over 40 instructional videos keyed to the text

Accessing the Web Edition

TIP If you encounter problems registering your product or accessing the Web Edition, go to www.peachpit.com/support for assistance.

You must register your purchase on peachpit.com in order to access the online content:

1. Go to www.peachpit.com/illustratorvqs2022.
2. Sign in or create a new account.
3. Click **Submit**.
4. Answer the question as proof of purchase.
5. Access the **Web Edition** from the **Digital Purchases** tab on your Account page.
6. Click the **Launch** link to access the product.

If you purchased a digital product directly from peachpit.com, your product will already be registered. However, you still need to follow the registration steps and answer the proof-of-purchase question to access the Web Edition.

2

Customizing the Application

Adobe Illustrator provides vast customization capabilities to best suit your needs when using the application.

You can organize tools and panels as needed and save those settings for future use.

In This Chapter

Accessing the Document Windows	12
Using the Toolbar	14
Working with Panels	16
Working with the Properties Panel	18
Working with the Control Panel	19
Customizing Workspaces	20
Configuring Illustrator Preferences	22

Accessing the Document Windows

Illustrator lets you have multiple files open simultaneously.

Work with nested documents

By default, files are nested in the document window.

- Activate a document by clicking its tab (Figure 2.1).
- Close a document by clicking the X icon on the tab.

Work with floating documents

Documents can also reside apart from the application frame. This can be useful if you are using multiple monitors.

- Float a nested document by dragging its tab from the application frame.
- Nest a floating document by dragging its title bar onto the application frame (Figure 2.2).



FIGURE 2.1 Clicking a nested tab activates the document

TIP You can determine how documents open using **Preferences > User Interface**. The default setting is **Open Documents as Tabs**.



FIGURE 2.2 Dragging a floating document by its title bar to nest it in the application frame

Tile the document windows

To tile all open documents so they are visible in the application frame, do either of the following:

- Click the **Arrange Documents** button in the application bar and select a tiled option (**Figure 2.3**).
- Choose **Window > Arrange > Tile**.

Consolidate the document windows

To gather all open documents so they are nested and tabbed in the application frame, do either of the following:

- Click the **Arrange Documents** button in the application bar and click the **Consolidate All** icon (top left).
- Choose **Window > Arrange > Consolidate All Windows**.

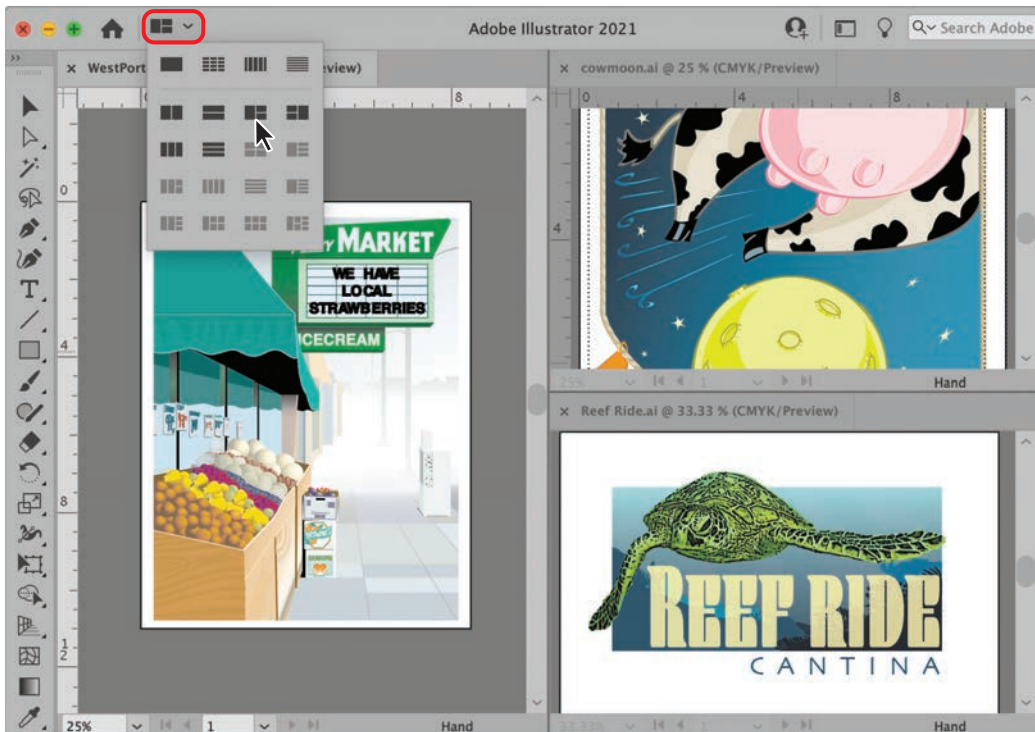


FIGURE 2.3 Clicking the Arrange Documents button displays options for tiling and consolidating open windows



VIDEO 2.1
Working with multiple documents

Using the Toolbar

By default, the various tools associated with an assigned workspace reside in the toolbar, which is docked on the left side of the application frame.

Select a tool

Do either of the following:

- Click the tool in the toolbar.
- Press the keyboard shortcut for the tool.

TIP The keyboard shortcut for a tool is shown in parentheses after the tool name when you hover your mouse over it.

Show hidden tools

Similar tools are organized in groups and identifiable by a small triangle in the lower-right corner of the visible tool indicating hidden tools. The hidden tools are accessible by doing either of the following:

- Click+hover over the visible tool.
- Press **Alt/Option**+click to cycle through the individual hidden tools.

Reposition the toolbar

The toolbar can be undocked and moved by doing the following:

- Click+drag the title bar to the toolbar's desired location.

Float a tool group

Do the following:

- Click+drag the tool group tear-off tab.

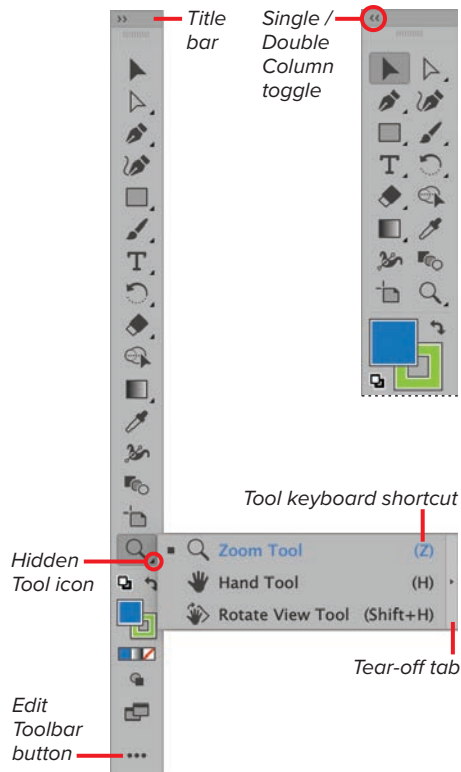


FIGURE 2.4 Toolbar customization features

View tools in double or single column

Do the following:

- At the top left of the toolbar, click the double arrows (**Figure 2.4**).



VIDEO 2.2
Customizing toolbars

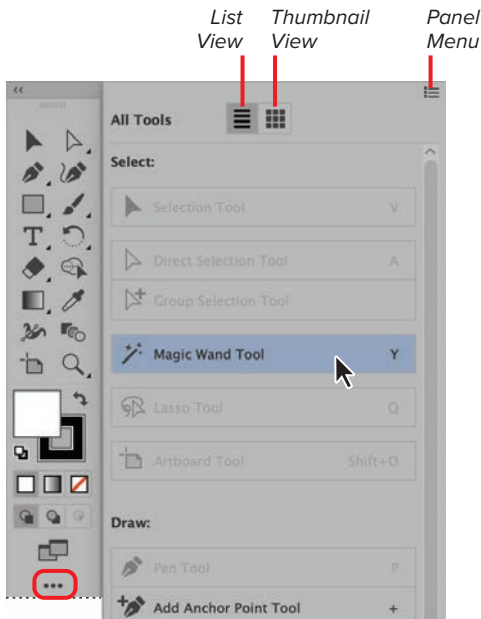


FIGURE 2.5 Selecting a tool from the All Tools drawer

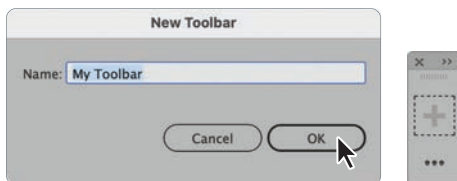


FIGURE 2.6 Creating a new toolbar using the All Tools drawer panel menu

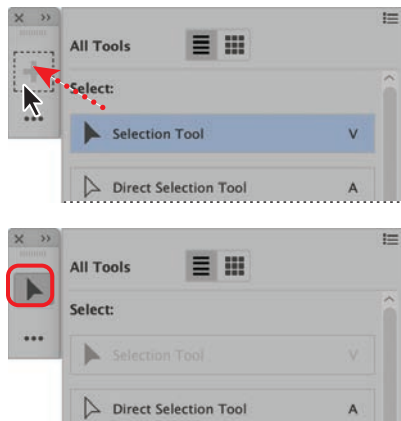


FIGURE 2.7 Adding a tool to a new toolbar

Access the All Tools drawer

The All Tools drawer (Figure 2.5) contains every tool provided by Illustrator. To access them, do the following:

1. Click the **Edit Toolbar** button.
2. Click a tool to select it.

TIP Tools can be selected and used without adding them to the toolbar.

Add a tool to the toolbar

Do the following (Figure 2.6):

1. Click the **Edit Toolbar** button to open the All Tools drawer.
2. Click+drag the tool onto the toolbar.

TIP Tools that appear dimmed in the All Tools drawer reside in the toolbar.

Delete a tool from the toolbar

Do the following:

1. Click the **Edit Toolbar** button to open the All Tools drawer.
2. Click+drag the tool away from the toolbar.

Create a new toolbar

Do the following:

1. Open the **New Toolbar** dialog box by doing either of the following:

Choose **Windows > Tools > New Toolbar**.

Click the **Edit Toolbar** button and then choose **New Toolbar** from the tool drawer panel menu.

2. In the New Toolbar dialog box, enter a **Name**, and then click **OK** (Figure 2.7).

The new empty toolbar will appear floating (undocked) on your screen.

Working with Panels

The numerous panels included with Illustrator provide powerful tools for creating and modifying your artwork. Because there are so many, Illustrator lets you easily access and organize them as needed to best suit your work needs (Figure 2.8).

Open a closed panel

Do the following:

- Choose **Window** > [panel name].

TIP Depending on your workspace configuration, panels may open as docked or floating, individually or within a group.

Open a collapsed panel

Collapsed panels display only their icons. To open one, do any of the following:

- Choose **Window** > [panel name].
- Click the icon for the collapsed panel.
- Click the **Expand Panels** button to open all the collapsed panels in the dock (Figure 2.9).

Close a docked panel

Do the following:

1. Right-click the panel tab or icon.
2. Choose **Close** from the context menu.

Close a floating panel

Do the following:

- Click the panel **Close** button (Figure 2.10).

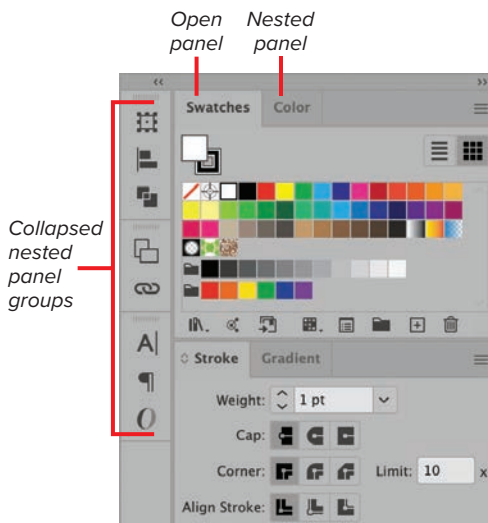


FIGURE 2.8 Collapsed and open panel groups

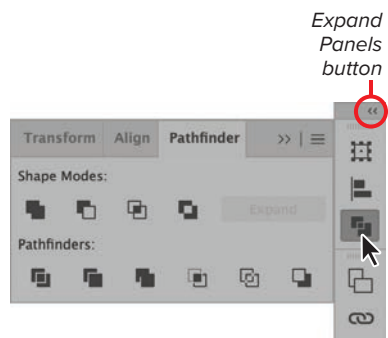


FIGURE 2.9 Expanding a collapsed panel

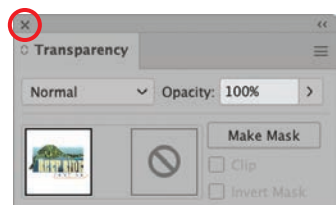


FIGURE 2.10 Close button on a floating panel

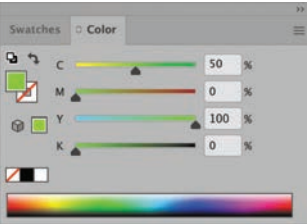
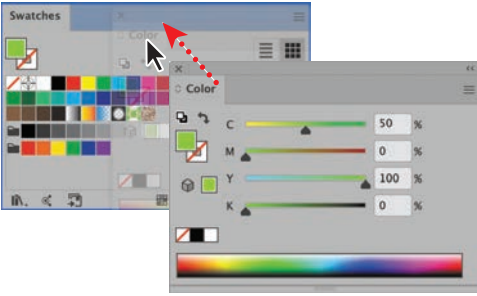


FIGURE 2.11 Nesting a floating panel to create a panel group

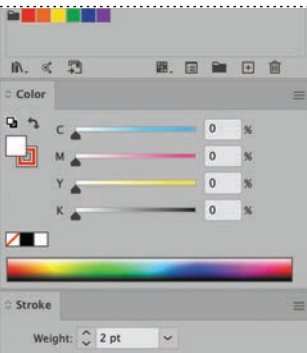
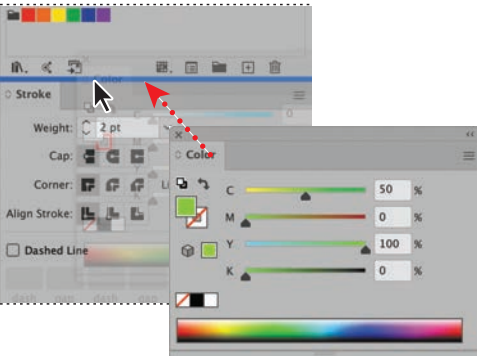


FIGURE 2.12 Docking a floating panel

Move a panel

Do the following:

- Click+drag the panel tab.

Move a panel group

Do the following:

- Click+drag the group title bar.

Nest a panel in a group

Do the following:

- Click+drag the panel tab onto the group (Figure 2.11).

TIP A blue boundary around the destination panel indicates you are creating a group.

Dock a panel

Do the following:

- Click+drag the panel tab above or below another docked panel (Figure 2.12).

TIP A blue horizontal highlight indicates you are docking the panel.

Dock a panel group

Do the following:

- Click+drag the panel title bar above or below another docked panel.

Maximize or minimize panels

Do the following:

- Double-click the panel title bar (Figure 2.13).

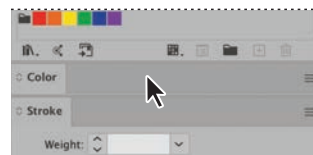


FIGURE 2.13 Color panel minimized after double-clicking the title bar

Working with the Properties Panel

The **Properties** panel consolidates several settings and editing features in a single location for easy access and use.

TIP The **Properties** panel appears by default in the **Essentials Classic** workspace.

Properties panel controls

The available controls are dependent on the selected object and are organized by category:

- **Transform:** Dimensions, position, angle, etc.
- **Appearance:** Fill and stroke, opacity, effects, etc.
- **Dynamic:** Type settings, cropping, masking, etc.
- **Quick actions:** Tasks associated with the selection, such as creating outlines from text objects

Open the Properties panel

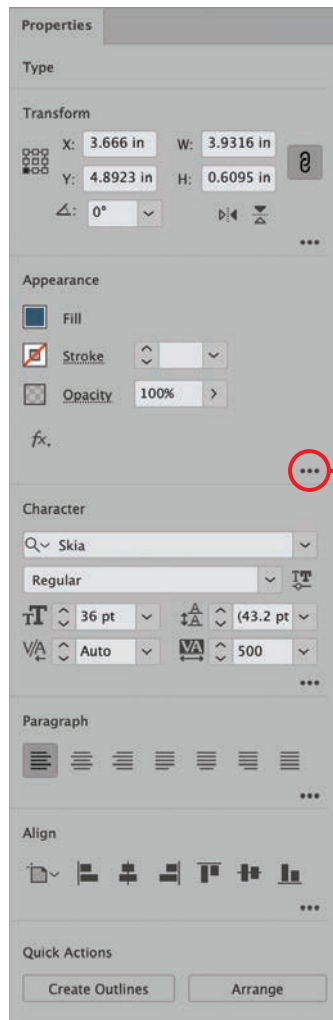
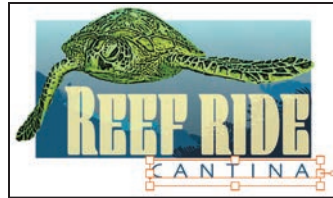
Do the following:

- Choose **Window > Properties Panel**.

Access full panel

Do the following:

- Click the **View More Options** button from the appropriate panel section to open the full panel (**Figure 2.14**).



View More Options button

FIGURE 2.14 Displaying the controls for a selected text object in the Properties panel

Working with the Control Panel

TIP The Control panel appears by default in the Essentials Classic workspace.

The Control panel lets you quickly access settings for selected elements. By default, the Control panel resides docked at the top of the application frame (Figure 2.15).



FIGURE 2.15 Displaying the attributes of a gradient object in the Control panel

Open the Control panel

Do the following:

- Choose **Window > Control Panel**.

Change the dock position

Do the following:

- From the Control panel menu, select **Dock to Bottom** or **Dock to Top**.

Float the Control panel

Do the following:

- Click+drag the gripper bar away from the docked location.

Customize which controls appear in the panel

Do the following:

- From the Control panel menu, select or deselect the settings you want to appear in the panel.

TIP The options displayed in the Control panel depend on the size of your application frame and the number of options selected in the panel menu.

Customizing Workspaces

Illustrator includes different project-based application configurations, as well as the capability to create and manage new workspaces.

Access the Workspace menu

Do either of the following:

- Choose **Window > Workspace**.
- Click the **Switch Workspace** button on the right side of the application bar (Figure 2.16).

Reset a workspace

If you change the configuration of a workspace (open or close a panel, add or delete a tool, etc.), you can revert to the original settings by doing either of the following:

- Choose **Window > Workspace > Reset [workspace name]**.
- Click the **Switch Workspace** button and select **Reset [workspace name]**.

Save a workspace

You can create a customized workspace using the application settings you've configured.

1. Customize the interface to suit your needs.
2. Choose **New Workspace** from the **Workspace** menu.
3. In the **New Workspace** dialog box, enter a name and then click **OK** (Figure 2.17).

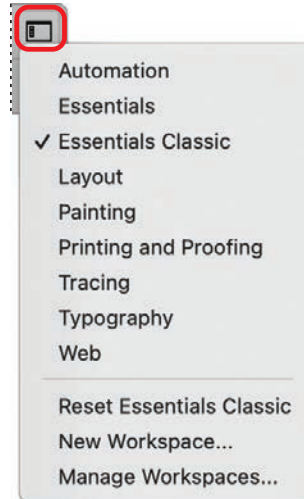


FIGURE 2.16 The Switch Workspace menu

Customizing the workspace

These are some options for customizing the workspace:

- Open and close panels
- Dock and float panels
- Collapse and expand panels
- Add and delete tools in the toolbar
- Open or close the Control panel

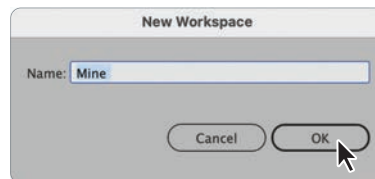


FIGURE 2.17 Creating a saved workspace and the result displayed in the menu

Make a copy of a saved workspace

Do the following (Figure 2.18):

1. Choose **Manage Workspaces** from the **Workspace** menu.
2. In the dialog box, select the saved workspace you want to duplicate.
3. Click the **New Workspace** button.
4. Customize the name if you like and then click **OK**.

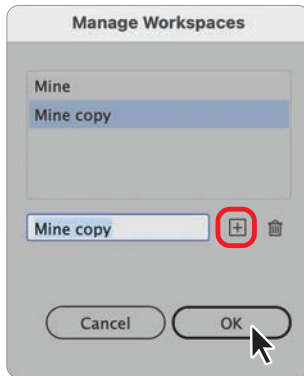


FIGURE 2.18 Creating a copy of a saved workspace and the result displayed in the menu

Rename a saved workspace

Do the following:

1. Choose **Manage Workspaces** from the **Workspace** menu.
2. In the dialog box, select the saved workspace you want to rename.
3. Edit the name.
4. Click **OK** to apply the change.

Delete a saved workspace

Do the following (Figure 2.19):

1. Choose **Manage Workspaces** from the **Workspace** menu.
2. In the dialog box, select the saved workspace you want to delete.
3. Click the **Delete Workspace** button.
4. Click **OK** to remove the workspace.

TIP You can copy, rename, or delete only workspaces that you create. The workspaces included with the application cannot be altered.

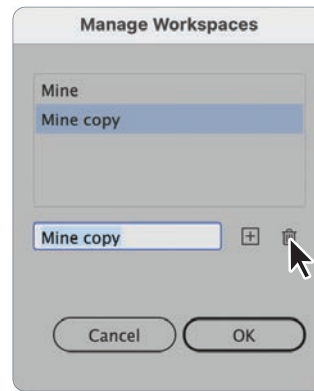


FIGURE 2.19 Deleting a saved workspace and the result displayed in the menu



VIDEO 2.3
Managing workspaces

Configuring Illustrator Preferences

The **Preferences** panel lets you customize the settings for your Illustrator application (display options, commands, panel positions, type settings, etc.).

Open the Preferences dialog box

The **Preferences** dialog box allows you to customize your Illustrator application.

To access the dialog box (**Figure 2.20**), do any of the following:

- Choose **Edit > Preferences** (Windows) or **Illustrator > Preferences** (macOS) and select an option from the context menu.
- Click the **Preferences** button in the **Control** panel.

TIP To learn more about the individual **Preferences** tab sections, see **Appendix A**.

Set a preference

In the **Preferences** dialog box, do the following:

1. Select the appropriate section tab.
2. Modify the individual settings, as needed.
3. Click **OK** to apply the change.

Reset all preferences

To restore the default application preferences, do the following

1. In the **General** tab section of the **Preferences** dialog box, click the **Reset Preference** button.
2. Click **OK** to close the dialog box and confirm the reset.
3. Quit and then relaunch Illustrator to have the default preferences take effect.

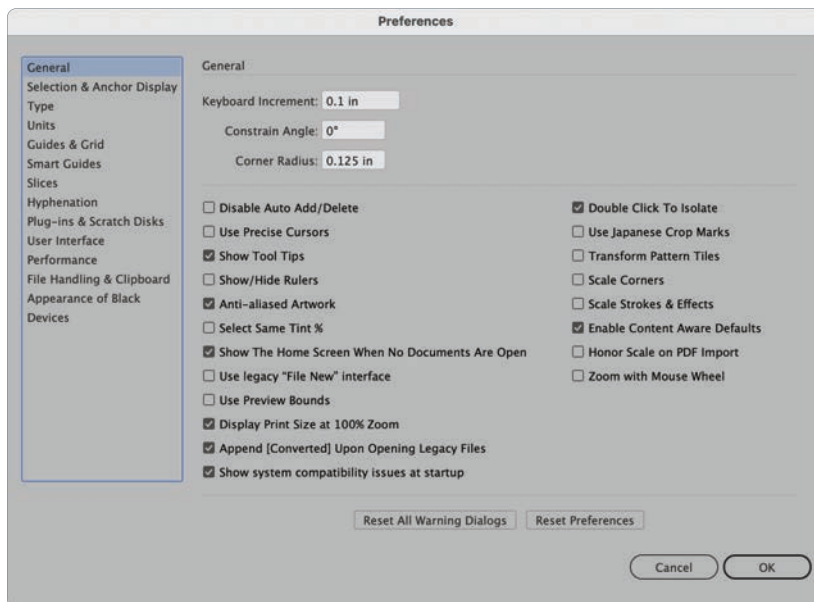


FIGURE 2.20 The General section of the Preferences dialog box

Index

Symbols

- 3D and Materials panel
 - applying effects with 219, 220, 221
 - Lighting settings 221
 - Materials settings 220
 - Object settings 219
- 3D (Classic) effect
 - applying 218
- 3D Object types
 - in 3D and Materials panel 219
- 3D widget
 - adjusting an object's rotation with 222

A

- Acrobat (.pdf) files
 - importing 253
 - saving as 260
- Adobe Fonts 123
 - activating 283
- aligning elements 75–76
- aligning text
 - in Paragraph panel 131
- Align panel
 - arranging objects with 75–76
- Align Stroke options 91
- All Tools drawer
 - editing toolbar with 15
- anchor points
 - display preferences 276
 - editing tools 97
- angle
 - constraint settings 274
- Animated Zoom
 - preferences 282
 - using 53
- Appearance of Black preferences 285
- Appearance panel
 - about 239
 - managing applied effects with 240, 241
- Application frame
 - accessing learning materials from 5
 - creating a file from 7
 - opening a file from 6
- Arc tool
 - drawing with 104
- area type
 - adding 118
 - modifying 119
 - positioning 134
- Area Type Options dialog box 134
- Arrange commands
 - keyboard shortcuts 288
 - modifying object stacking order with 74
- Arrange Documents button 13
- arrowheads
 - adding to stroke 93
- artboards
 - adding 25–26
 - Artboard Options dialog box 27–29
 - Artboards panel 24
 - Artboard tool 24
 - Delete Empty Artboards command 31
 - deleting 31
 - dimension and orientation 29–30
 - display options 30
 - distributing 32

- Duplicate Artboards command 31
- exporting for screens 266
- managing 31
- modifying 27
- Move/Copy with Artwork button 31
- overview 24
- Rearrange All Artboards button 32
- Rearrange All Artboards dialog box 32
- selecting 32
- art brushes 146
 - creating 156
 - setting options 157
- Artistic effects
 - in Effect Gallery dialog box 231
- Asset Export panel 269
- assets
 - exporting with Export for Screens 268
 - exporting with the Asset Export panel 269
- AutoCAD file formats
 - exporting to 265

B

- baseline shift
 - in Character panel 128
- bleeds
 - defined 9
- Blend commands
 - blending objects with 201
 - modifying blended objects with 203
- blending modes
 - about 207
- Blend Options dialog box
 - customizing blending settings with 202
- Blend tool
 - blending objects with 201
- Bloat tool
 - reshaping objects with 197
- Blob Brush tool
 - customizing 166
 - painting compound paths with 165
- Blur effects 235
- BMP format
 - exporting files to 265
- bounding boxes
 - display preferences 276
 - modifying objects using 170–171
- bristle brushes 146
 - creating 158
 - setting options 159
- Brushes panel
 - working with 146–149
- Brush libraries
 - saving brushes 162
 - working with 150–151
- Brush Stroke effects
 - in Effect Gallery dialog box 232
- brush types 146
 - finding in libraries 151

C

- calligraphic brushes 146
 - creating 152
 - setting options 153
- cap
 - stroke options 90
- Character panel
 - accessing 122
 - baseline shift 128
 - Kerning 127
 - leading 127
 - rotation 128
 - scale 128
 - settings 127
 - size 127
 - text treatments 129
 - tracking 127
- Character Styles panel
 - Options dialog box 138
 - working with 137
- Cleanup command
 - using with paths 256
- Clipboard Handling preferences 284
- Clipping Mask commands
 - creating 204
 - modifying 205
- clipping sets
 - modifying with Layers panel 205

- CMYK color mode
 - about 36
 - changing in document 257
 - converting objects to RGB 48
 - color
 - adjusting color balance 49
 - adjusting saturation 49
 - converting to grayscale 49
 - converting to inverse 49
 - Color groups
 - working with 44
 - Color Guide panel
 - about 46
 - base color 46
 - color variation types 47
 - harmony rules 46
 - saving color groups to Swatches panel 47
 - Color Halftone
 - Pixelate effect 236
 - color modes
 - change for document 48
 - change for objects 48
 - types 36
 - Color panel
 - adjust a color value with 39
 - color mode controls 39
 - converting spot colors with 38
 - Creating a swatch with 43
 - options 38
 - Color Picker dialog box
 - working with 36–37
 - color proofing
 - about 258
 - Color Settings dialog box
 - modifying color management settings with 257
 - color types 38
 - color warnings
 - correcting 36
 - Content Aware settings 275
 - Control panel
 - working with 19
 - Convert to CMYK command 48
 - changing elements with 257
 - Convert to Grayscale command
 - changing elements with 257
 - Convert to RGB command 48
 - changing elements with 257
 - Convert to Shape effect 223
 - Copy and Cut commands
 - clipboard handling preferences 284
 - keyboard shortcuts 288
 - corner
 - stroke options 91
 - CPU view mode
 - command 52
 - Create Outlines command
 - converting text with 144
 - crop marks
 - applying as effect 223
 - using Japanese style 274
 - Crystallize
 - Pixelate effect 236
 - Crystallize tool
 - reshaping objects with 199
 - cursor
 - display options 274
 - Curvature tool
 - drawing with 102
- D**
- dashed and dotted lines
 - adding to strokes 92
 - aligning 92
 - De-Interlace
 - Video effect 236
 - Devices preferences 286
 - Direct Selection tool 79
 - Discovery panel 5
 - Distort effects
 - in Effect Gallery dialog box 232
 - Distort & Transform effects 224
 - distributing elements 75–76
 - Document Color Mode commands
 - changing 257

- documents
 - changing color modes 257
 - color mode 48
 - creating 7
 - exporting 262
 - exporting for screens 266
 - maximizing efficiency 256
 - opening 6
 - packaging 261
 - saving 260
 - templates 10
- document windows
 - consolidating 13
 - floating 12
 - nested 12
 - tiled 13
- drawing modes
 - arranging objects using 74
- E**
- Edit Color command
 - converting elements with 257
- Edit Colors dialog box 50
- Edit menu
 - keyboard shortcuts 288
- Effect Gallery dialog box 230
 - Artistic effects 231
 - Brush Stroke effects 232
 - Distort effects 232
 - Sketch effects 233
 - Stylize (Photoshop) effect 234
 - Texture effects 234
- Effect menu 218
 - 3D and Materials 219
 - 3D (Classic) 218
 - Blurs 235
 - Convert to Shape 223
 - Crop Marks 223
 - Distort & Transform 224
 - Effect Gallery 230
 - Offset Path 225
 - Outline Object 225
 - Outline Stroke 225
 - Pathfinder 225
 - Pixelate 236
 - Rasterize 226
 - Stylize (Illustrator) 227
 - SVG Filters 228
 - Video 236
 - Warp 229
- effects
 - applying vs. transforming objects 218
 - modifying applied 238
- Ellipse tool
 - creating ovals and circles with 113
- embedded files 246
 - linking 249
 - pasting 247
 - placing 247
- Enhanced Metafile (EMF)
 - exporting files to 265
- Eraser tool
 - customizing 184
 - cutting objects and paths with 184
- Export As command
 - exporting files with 262
- Export for Screens dialog box
 - exporting assets with 268
 - exporting files and artboards with 266, 267
- exporting
 - artboards 266
 - Asset Export panel 269
 - assets 268
 - files to JPEG format 263
 - files to PNG format 264
 - files to TIFF format 264
 - files using Export As 262
 - for screens 266
- Export Selection command 268
- Eyedropper tool
 - Change fill and stroke with 35
- F**
- File Handling preferences 283
- File Info command
 - managing metadata with 259
- File menu
 - keyboard shortcuts 288

- files. See documents
- File Save preferences 283
- fill and stroke
 - change with Eyedropper tool 35
 - controls 34
- fills 34
 - definition 34
 - selecting 34
 - updating with Color Picker 37
- Find and Replace command 142
- fonts
 - applying 126
 - in Character panel 122
 - searching for 124–125
 - selecting 123
 - types of 123
- Free Distort button
 - Free Transform tool setting 181
- Freeform gradients 210
 - modifying 212
- Free Transform tool
 - modifying objects with 181
- Free Transform widget
 - working with 181

G

- Gaussian Blur effect 235
- General preferences 274
- GIF optimization settings
 - saving for web using 270
- glyphs
 - inserting into text 139
- Glyphs panel
 - working with 139
- GPU performance
 - magnification options and 52
 - preferences 282
- Gradient Annotator
 - editing gradients with 210
- Gradient panel 209

- gradients
 - applying to fills 209–213
 - applying to strokes 214
 - types 210
- Gradient tool 209
- graphic styles
 - libraries 244
 - working with 242–243
- Graphic Styles panel
 - applying graphic styles with 242–243
- grids
 - display preferences 278
 - working with 63
- Grid tools 104
- Group commands
 - keyboard shortcuts 288
 - working with 71
- Group Selection tool 80
- guides
 - display preferences 278
 - working with 62

H

- Hand tool
 - panning with 56
- hard proofs
 - about 258
- Hexadecimal (#) color mode
 - about 36
- hierarchy
 - managing artwork 72
 - objects and layers 72
- Home screen
 - accessing learning materials from 5
 - creating a new file from 7
 - opening a file from 6
- HSB color mode
 - about 36

- hyphenation
 - modifying options 133
 - preferences 280
- Hyphenation dialog box
 - setting paragraph options with 133
- I**
- Illustrator application
 - launching 4
 - learning resources 5
 - overview 2–5
- Illustrator effects
 - about 218
- Illustrator menu
 - keyboard shortcuts 288
- image files
 - opening in Illustrator 247
- Image Trace panel 250
 - converting raster images to vector artwork with 250
 - customizing conversions 251
 - displaying results 251
 - presets 250
- in-context menu
 - choosing a special character with 139
- Isolation mode
 - activating 58
 - exiting 59, 83
 - working in 58–59, 82
- Isolation Mode
 - setting preference for 274
- J**
- Join tool
 - connecting paths with 187
- JPEG format
 - exporting files to 263
- JPEG optimization settings
 - saving for web using 272
- Justification dialog box
 - adjusting text with 131
- Justify option
 - in Paragraph panel 131

- K**
- kerning
 - adjusting 127
- keyboard increment
 - setting 274
- keyboard shortcuts 287
 - menu commands 288
 - tool commands 289
- Knife tool
 - cutting paths into segments with 185
- L**
- Lasso tool
 - making selections with 81
- layers
 - adding 68
 - flattening 73
 - locking and unlocking 66
 - managing hierarchy 72
 - merging 73
 - organizing 67
 - parent 67
 - selecting elements using 70
- Layers panel 66–70
- leading
 - adjusting 127
- learning resources 5, 287
- libraries
 - brushes 162
 - graphic styles 244
 - swatches 45
- Lighting
 - in 3D and Materials panel 221
- Linear gradients 210
 - applying to strokes 214
 - modifying 211
 - saving 213
- line break characters
 - inserting 140
- lines
 - drawing with Pen tool 98

- Line Segment tool
 - drawing with 104
- linked files 246
 - adding from desktop window 246
 - embedding 249
 - placing 246
- Links panel
 - managing placed files with 248–249
- Liquify tools
 - reshaping objects with 194
- Live Paint Bucket tool 216
- Live Paint groups
 - edges and faces 215
 - working with 215
- Live Paint Selection tool
 - working with 216
- locking and unlocking
 - layers 66
 - selections 288

M

- Magic Wand tool 81
- magnification
 - GPU performance and 52
 - in status bar 54
 - mouse preferences 275
 - View menu commands 54
 - Zoom tool 53
- Marquee zoom 53
- masking artwork 204
- Materials
 - in 3D and Materials panel 220
- menu commands 288
- metadata
 - managing 259
- Metadata
 - customizing 259
- Mezzotint
 - Pixelate effects 236
- Microsoft Word documents
 - importing 254
- Move command 192

N

- Navigator panel 57
- New Document dialog box 8
- NTSC Colors
 - Video effect 236

O

- Object menu
 - Arrange commands 74
 - keyboard shortcuts 288
 - modifying artwork with 192
- Offset Path effect 225
- opacity masks
 - creating 208
- Opacity settings
 - in panels 206
- OpenType panel
 - working with 140
- Outline mode
 - viewing in 58
- Outline Object effect 225
- Outline Stroke command 96
- Outline Stroke effect 225
- Outline view mode 58
- Out of Gamut Color warning
 - correcting 36
- Out of Web Color warning
 - correcting 36
- overset text
 - managing 143

P

- Package dialog box
 - packaging files with 261
- Paintbrush tool
 - customizing 164
 - painting paths with 163
- panels 16
 - docking 17
 - nesting 17
 - working with 16

- panning
 - with Hand tool 56
- Pantone colors
 - about 38
- Paragraph panel
 - align options 131
 - indents 132
 - justification 131
 - opening 130
 - space between 132
- Paragraph Styles panel
 - Options dialog box 138
 - working with 137
- Paste commands
 - clipboard handling preferences 284
 - keyboard shortcuts 288
- pasting
 - embedded files 247
 - text formatting preferences 284
- Path Eraser tool
 - removing path segments with 187
- Pathfinder effects 225
- Pathfinder panel
 - action definitions 191
 - combining and dividing objects with 190
 - Converting objects into compound shapes with 191
- paths
 - Cleanup command 256
 - creating 97
 - drawing with Pen tool 98
- pattern brushes 146
 - creating 160
 - setting options 161
- PDF Import Options dialog box
 - opening Acrobat files in Illustrator with 253
- Pencil tool
 - customizing 168
 - drawing with 108
 - sketching paths with 168
 - using 168
- Pen tool 98–101
- Perspective Distort button
 - Free Transform tool setting 181
- Photoshop effects
 - about 218
 - applying 230
- Photoshop Export Options dialog box
 - exporting files with 265
- Photoshop files
 - importing 252
- Photoshop Import Options dialog box
 - importing files with 252
- pie shape
 - creating from ellipses 113
- Pixelate effects 236
- Place command
 - importing files with 246
- placed files
 - managing 248
 - replacing 249
- Place PDF dialog box
 - placing Acrobat files with 253
- Plug-ins preferences 281
- PNG format
 - exporting files to 264
- Pointillize
 - Pixelate effects 236
- point text
 - about 118
- Polar Grid tool
 - drawing with 107
- Polygon tool
 - creating shapes with 114
- Preferences dialog box
 - accessing 273
 - Appearance of Black 285
 - Clipboard Handling 284
 - File Handling 283
 - General 274
 - Guides & Grid 278
 - Hyphenation 280
 - Performance 282
 - Plug-ins & Scratch Disks 281

- Preferences dialog box (*continued*)
 - Reset All Warning Dialogs button 275
 - Reset Preferences button 275
 - Selection & Anchor Display 86, 276
 - Slices 280
 - Smart Guides 279
 - Type 277
 - Units 278
 - User Interface 281

- presets
 - customizing for new documents 9
 - in New Document dialog box 8

- Preview modes
 - new document options 9

- Preview view mode 58

- Process colors
 - about 38
 - changing with Color panel 39

- Proof Colors command
 - displaying 258

- Proof Setup dialog box
 - customizing soft proofs with 258

- Properties panel
 - modifying applied effects with 238
 - working with 18

- Pucker tool
 - reshaping objects with 196

Q

- Quit Illustrator command
 - keyboard shortcut 288

- Quit options
 - for clipboard file handling 284

R

- Radial Blur effect 235

- radial gradients 210
 - applying to strokes 214
 - modifying 211
 - saving 213

- Rasterize command
 - converting vector objects with 256

- Rasterize effect 226

- Recolor Artwork dialog box 49

- Rectangle tool
 - creating shapes with 110–111

- Rectangular Grid tool
 - drawing with 106–107

- Reflect command 192

- Reflect tool
 - reflecting objects with 174, 175

- Reset All Warning Dialogs button 275

- Reset Preferences button 275

- Reshape tool
 - changing shape contours with 180

- RGB color mode
 - about 36
 - changing in document 257

- Rotate command 192

- Rotate tool
 - rotating objects with 172–173

- Rotate View tool 56

- rotation
 - adjusting using 3D widget 222
 - of text characters 128

- Rounded Rectangle tool
 - creating shapes with 110, 112
 - setting default corner radius for 274

- Rubber Band Preview
 - about 103
 - preferences for 103

- rulers
 - about 60
 - artboard 61
 - global 61
 - point of origin 61
 - showing and hiding 60, 274
 - unit of measurement 60

S

- Save a Copy command 260

- Save As command 260

- Save command 260

- Save for Web dialog box
 - exporting files with 270

- saving files
 - alternative formats for 260
 - in native .ai format 260
 - preferences 283
- Scale command 192
- Scale Strokes & Effects
 - setting default preferences 177
- Scale tool
 - resizing objects with 176–177
- scaling
 - preferences 275
 - text characters 128
- Scallop tool
 - reshaping objects with 198
- scatter brushes 146
 - creating 154
 - setting options 155
- Scissors tool
 - cutting paths with 185
- Scratch Disks preferences 281
- Screen modes
 - types 55
- selecting
 - keyboard shortcuts for 288
 - preferences 86
 - using commands 84
 - using layers 70
- Selection preferences 276
- Selection tool 78
- Select menu
 - keyboard shortcuts 288
- Shape Builder tool
 - combining shapes 182
 - customizing behavior of 183
 - deleting segments 182
- Shaper tool
 - sketching shapes with 167
- Shape tools 110–113
- Shear command 192
- Shear tool
 - slanting or skewing objects with 178–179
- Show/Hide commands
 - grids 63
 - guides 62
 - rulers 60
- Sketch effects
 - in Effect Gallery dialog box 233
- Slices preferences 280
- Smart Blur effects 235
- Smart Guides
 - preferences 279
 - working with 64
- Smooth tool
 - adjusting Bézier paths with 186
 - customizing 186
- soft proofs
 - customizing 258
- special characters
 - working with 139
- Spiral tool
 - drawing with 106
- Spot colors
 - about 38
 - converting to process colors 38
- Star tool
 - creating shapes with 115
- Stroke panel 89–93
- strokes
 - alignment 91
 - applying gradients to 214
 - arrowheads 93
 - controls 34
 - converting to objects 96
 - corners 91
 - dashed and dotted lines 92
 - definition 34
 - end cap 90
 - outlining 96
 - selecting 34, 88
 - updating with Color Picker 37
 - variable-width 94–95
 - weight 90

- Styles
 - character and paragraph 137
 - graphic 242–243
- Stylize (Illustrator) effect 227
- Stylize (Photoshop) effect
 - in Effect Gallery dialog box 234
- Sublayers 66
 - adding 69
 - selecting elements within 71
- SVG Filter effects 228
- swatches
 - creating using Color panel 43
 - creating using Swatches panel 42
 - libraries 45
 - modifying 43
- Swatches panel
 - about 40
 - color groups 44
 - color types 41
 - swatch libraries 45
- Switch Workspace button
 - accessing Workspace menu with 20
- Symbols panel
 - saving objects with 116

T

- Tabs panel
 - working with 135–136
- Targa (TGA)
 - exporting files to 265
- templates
 - saving as 260
 - working with 10
- text content
 - managing 141
 - overset text frames 143
 - searching and replacing 142
- text documents
 - placing 254
- Text Format (TXT)
 - exporting files to 265
- text treatments
 - of characters 129
- Texture effects
 - in Effect Gallery dialog box 234
- TIFF format
 - exporting files to 264
- toolbar
 - creating new 15
 - editing with All Tools drawer 15
 - keyboard shortcuts 289
 - overview 14
 - screen modes 55
 - tool groups 14
- tool tips
 - showing and hiding 274
- Touch Type tool
 - modifying characters with 129
- tracking
 - adjusting 127
- Transform Again command 192
- Transform commands 192
- Transform Each dialog box 192
- Transform panel
 - modifying objects with 188–189
- Transparency panel 206
- Twirl tool
 - reshaping objects with 195
- Type menu
 - Create Outlines command 144
 - Special Character commands 140
- Type on a Path attributes
 - applying to text 121
- Type on a Path Options dialog box,
 - working with 121
- Type on a Path tool
 - adding text with 120
- Type on path
 - modifying 120, 121
- Type preferences 277
- Type tool
 - adding text with 118
- Type tools group 118

U

- Undo command
 - keyboard shortcut for 288
 - preferences 282
- Units preferences 278
- User Interface preferences 281

V

- variable-width strokes 94
- Vertical Type on a Path tool
 - adding text with 120
- Vertical Type tool
 - adding text with 118
- Video effects 236
- View menu
 - keyboard shortcuts 288
- view modes
 - changing 58
 - Isolation 58
 - Outline 58
 - Preview 58

W

- Wacom devices
 - working with brushes 151
 - enabling 286
- Warning dialog boxes
 - resetting 275
- Warp effects 229
- Warp tool
 - reshaping objects with 194
- white space characters
 - inserting 140
- Width tool
 - varying stroke with 95
- Window menu
 - opening panels with 16
- Windows Metafile (WMF)
 - exporting files to 265

- workspaces
 - customizing 20
 - Essentials Classic 3
 - Manage Workspaces dialog box 21
 - menu 20
 - New Workspace dialog box 20
 - resetting 20
 - saving 20
 - Switch Workspace button 20
- Wrinkle tool
 - reshaping objects with 200

Z

- Zoom tool 53